

PRINTABLE INFO SHEET

Series: Manorwood Ranch & Cape
Homes

Model: NH376A Bellissimo



About This Model

Style: Ranch / Bedrooms: 3 / Bathrooms: 2 / Square Feet: 1559

CUSTOMER CONTACT

Notes:

PRINTABLE INFO SHEET

Series: Manorwood Ranch & Cape Homes
 Model: NH376A Bellissimo



Floorplan

NH376-A

● = Std. can light

NH376-A 2858 Approx. 1559 Sq. Ft.
 Optional attic stairwell not available.

Exterior Application with Opt. 27'4" Twin-Peak Dormer
 Some features may be optional.

Builder: Manorwood Homes	Callout: 2858	Revisions: 4-28-17	Scale: 3/32" = 1'-0"	Date: 7/8/14	Cust: -	Model/Eng. No.: NH376-A LIT
Title: Literature	Date: 8/22/14	Number: 108/14	Drawn By: OY	Reference: NONE	Dir: -	
					SIN: -	

CUSTOMER CONTACT

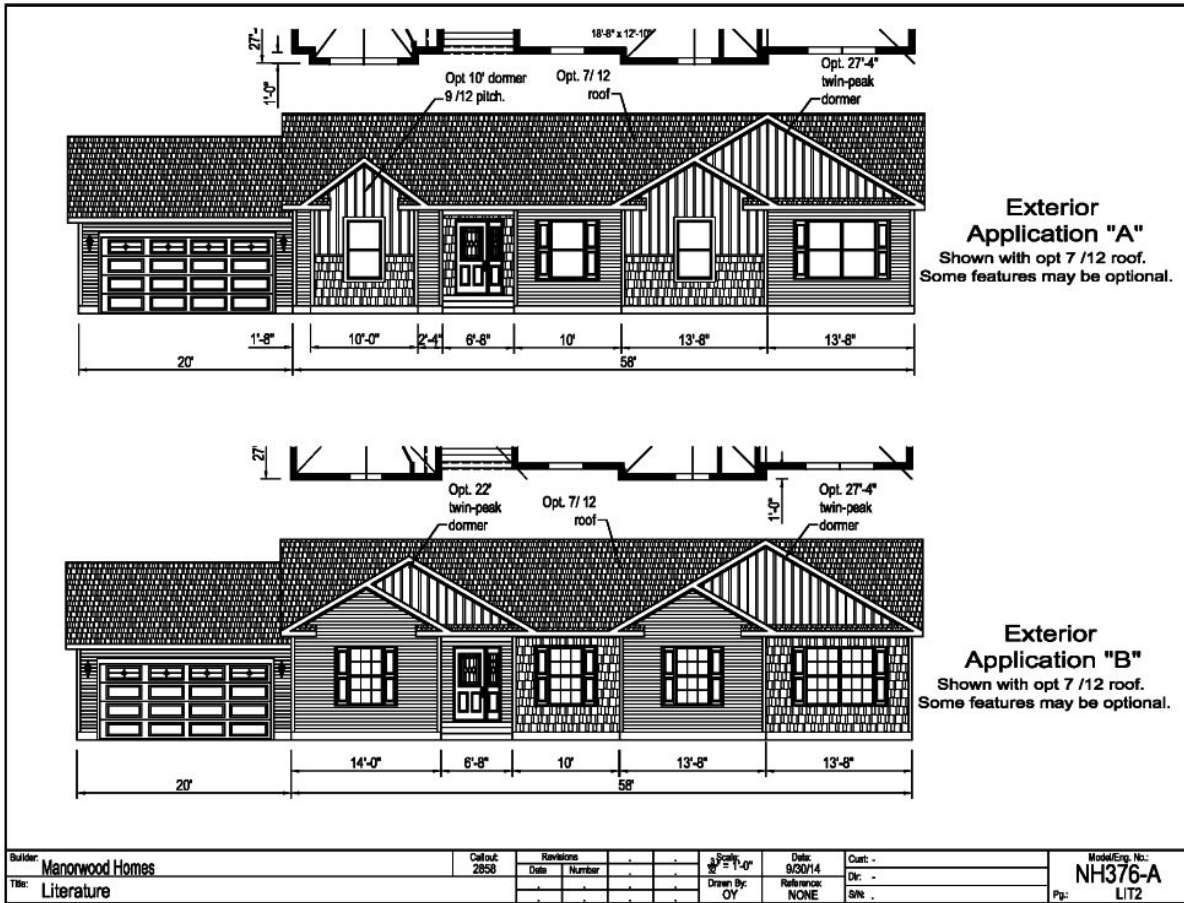
Notes: _____

PRINTABLE INFO SHEET

Series: Manorwood Ranch & Cape Homes
 Model: NH376A Bellissimo



Floorplan



CUSTOMER CONTACT

Notes:

PRINTABLE INFO SHEET

Series: Manorwood Ranch & Cape Homes
Model: NH376A Bellissimo



Standards & Features

FLOOR CONSTRUCTION

2X10 Floor Joists 16" O.C.
3/4 " T&G OSB Floor Decking

Insulated

Basement Stairwell

EXTERIOR WALLS

2X6 Studs 16" O.C.
Double 2X6 Top Plates
8' Wall Height
Structural OSB Sheathing
Whole House Wind Wrap
Vinyl Siding

INTERIOR WALLS

2X4 Interior Wall Studs 24" O.C.
2X4 Marriage Wall Studs 16" O.C. with OSB Sheathing
Primed 1/2" Smooth Drywall Throughout

ROOF AND CEILING

8' Flat Ceiling
5/12 Roof Pitch with 12" Eave
Pre-Engineered 40# Roof Trusses 24" O.C.
7/12 Roof Pitch with 12" Eave & NU701A
90 MPH Wind Exposure C Wind Load Design
Ice Shield
Structural OSB Roof Decking
Shingle Over Ridge Vent Ventilation
Vented Vinyl Soffit
Aluminum Fascia
Aluminum Drip Edge on all Roof Edges
Smooth Drywall Ceiling
Architectural Shingles (Limited Lifetime Warranty)

INSULATION

Exterior Walls R-21 Fiberglass Insulation
Ceiling R-38 Fiberglass Batt Insulation

EXTERIOR DOORS AND WINDOWS

3/0 x 6/8 6-Panel Fiberglass Door with Nickel Hardware
& Composite Jamb at Front Primed White
3/0 x 6/8 6-Panel Fiberglass Rear Door with Nickel Hardware
& Composite Jamb Rear Primed White
Door Pan on Exterior Doors
Low-E Vinyl Insulated Single Hung Argon Filled White
Windows & Muller where Applicable
Front & Rear Door Kwikset Lockset with Smart Key
15" Raised Panel Shutters Door Side

INTERIOR DOORS AND TRIM

2-Panel White Interior Doors w/ Lever Lock Sets and 3
Mortise Hinges
36" Doors - Where Available

Privacy Locks on

Bedroom & Bath Doors
Door Stops
White Wood Colonial Molding Package
Wire Shelving all Closets and Washer / Dryer Area
Brushed Nickel Hardware

FLOOR COVERING

Congoleum Vinyl Flooring (Kitchen, Baths, Utility and Foyer)
Mantra or Its Cozy 100% Continuous Filament Nylon Carpet
with Stain
5# Rebond Carpet Pad

KITCHEN

3/4 Overlay Classic Craft Cabinetry - KCMA Certified
Hardwood 5-Piece Manchester Oak or Barnwood Oak Mission
Flat Panel Doors

CUSTOMER CONTACT

Notes:

PRINTABLE INFO SHEET

Series: Manorwood Ranch & Cape Homes

Model: NH376A Bellissimo



Standards & Features (continued)

KITCHEN (continued)

Craftsman Cabinet Crown Moulding
42" Height Kitchen Overhead Cabinets
Dovetailed Drawers
100# Undermount Drawer Guides
Laminate Countertops with Self Edge
8" Deep Stainless Steel Kitchen Sink
Huntington Brass Single Lever Brushed Nickel Faucet with Sprayer
Power Range Hood
Brushed Nickel Hardware
USB Receptacle
Pressure Switch Interior Cabinet Light in Sink Base Cabinet
Corner Base Lazy Susan (where applicable)

BATHS

Huntington Brass Single Lever Brushed Nickel Faucets
Anti-Scald Valves for Showers
Bath Vanities to Match Kitchen Cabinets
Laminate Countertops with Self Edge
China Lavatories
Elongated Toilets
Lighted Exhaust Fans with Insulated Ducts– All Baths
2-Arm Light and Mirror at Vanity
60" One Piece Fiberglass Tub/Shower
Fiberglass Soaker Tub (per plan)
48" One Piece Fiberglass Shower with Glass Shower Enclosure (per plan)
Double Bowl Bath Vanity (per plan)
Hardwood Framed Mirrors

PLUMBING

PEX Water Lines Stubbed Through Floor

PLUMBING (continued)

Drain, Water and Vents Stubbed Through Floor
Shut Off Valves for all Sinks, Lavatories and Water Closets
Plumb, Wire and Vent for Washer/Dryer (Per Plan)
Oetiker Clamps

ELECTRICAL

200 AMP Electrical Service with 40/40 Panel Box
2 GFI Exterior Receptacles with In-Use Covers
Prairie Light at Front Exterior Door
Patina Lantern Light at Rear Exterior Door
Premium Interior Brushed Nickel Light Package (Includes Bedroom Ceiling Lights)
Smoke Detectors with Battery Back-up
Wire for Electric Range Carbon Monoxide Detector(s)
Electric Doorbell at Front Door

CAPE MODELS

12/12 Roof Pitch with 12" Eaves
12/12 & 7/12 Combination Roof Pitch with 12" Eaves – NN301A
Close-Off Package for 2nd Floor Including Interior Door and Partitions for On-Site Installation
3/4" OSB Floor Decking for 2nd Floor – *Shipped Loose*
(2)‘110' Electrical Circuits to Junction Boxes for Future Lights – Electrical Circuit to Junction Box for Future Smoke Detector(s) – Electrical Circuit to Junction Box for Future 3-Way Light on 2nd Floor
Rough-In Plumbing for Future Bath On 2nd Floor
Stairs with Railing, Handrail and Carpet Shipped Loose
2nd Floor Gable End Windows Optional
10 YEAR RESIDENTIAL WARRANTY

CUSTOMER CONTACT

Notes:
